

# Luxury Gets a New Address. on a Sprawling Green Landscape.



**Signatureglobal (India) Limited | CIN No.: U70100DL2000PLC104787**

Regd. Off: 13th Floor, Dr. Gopal Das Bhawan, 28, Barakhamba Road, Connaught Place, New Delhi - 110001

Corp. Off.: Ground Floor, Tower A, Signature Towers, South City 1, Gurugram, HARYANA - 122002

[www.signatureglobal.in](http://www.signatureglobal.in)

**Disclaimer:** Promoter urges every applicant to inspect the project site and shall not merely rely upon or to be influenced by any architectural impression, plan or sales brochure and, therefore, requested to make personal judgment prior to submitting an application for allotment. The Project is being developed in phases, hence, certain facilities/amenities etc, may be used by allottee of other phases. Unless otherwise stated, all the images, visuals, material and information contained herein are purely creative/artistic and may not be actual representations of any products and/or amenities. Further, the actual design may vary in the fit and finished form, from the one displayed above. Project details / specifications can also be accessed at the office of Haryana Real Estate Regulatory Authority website <https://haryanarera.gov.in/>. Journey time shown, if any, is based upon Google Maps, which may vary as per the traffic at a relevant point of time.

Rate mentioned does not include GST and other statutory charges, if applicable any. T & C Apply. "1 Sq. mt = 10.7639 sq. ft."

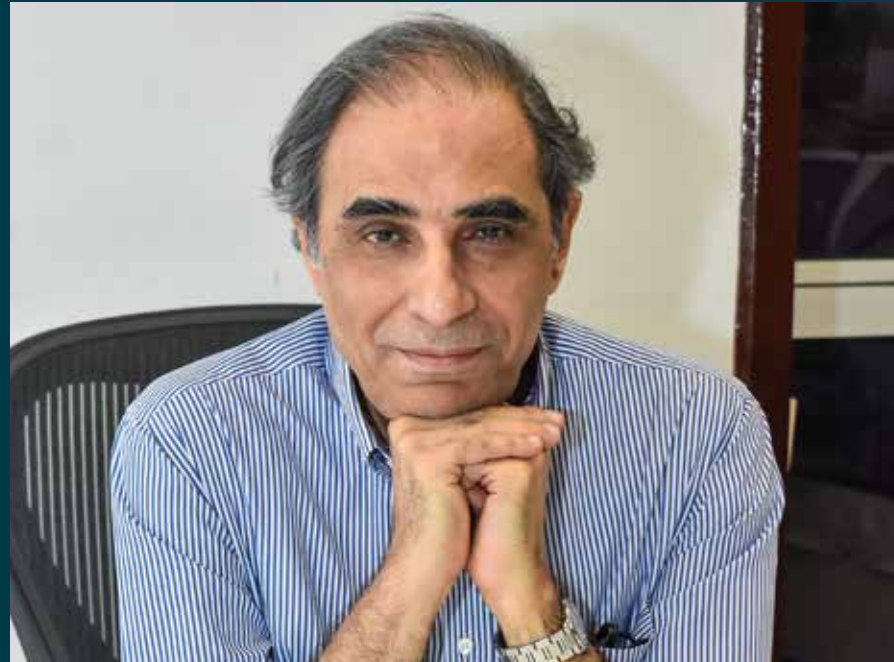




**INDEPENDENT  
FLOORS  
FOR THE  
INDEPENDENT  
YOU**

Start your Independent Innings at a place as unique as you, at Signature Global City 63A. One of the most respected leaders in realty, Signature Global offers you high-quality, luxury apartments at Golf Course Extension Road, spread across 5.0125 acres. Interior styling by the renowned interior designer Sonali Bhagwati, these apartments are envisioned to be the embodiment of perfection like a solitaire. Here, everything around you will motivate you to build that exclusive life you always dreamt of; to live on your own terms surrounded by world-class amenities and high-end security .





Designed by  
Padma Bhushan  
Architect  
Hafeez Contractor



Sonali Bhagwati

"There are no shortcuts to hard work." That is the motto of Sonali Bhagwati, an eminent architect and interior designer for the last 30 years. An alumnus of the prestigious institute CEPT, Ahmedabad, she is the recipient of a scholarship from L'institute Francais D'architecture to train in Paris under architect Bernard Kohn.

Bhagwati's sources of inspiration and role models are her parents. The former chief justice of India and Padma Vibhushan winner, her father had always shown her the path to excellence through hard work and intellect. Her mother has inculcated the admirable qualities of focus, dedication and a positive attitude. Mr. B.V. Doshi, the Pritzker prize winner, has always been her mentor and guide in her architectural journey.

Her philosophy resonates with that of Signature Global. She is associated with Signature Global for interior styling to give you vibrant homes, providing a socially relevant environment. Her designs are visualized with a deep understanding of client needs and aspirations. She and her team specialise in analysing and capturing the ever-changing socio-economic trends of the market that impact architecture and the built environment. A testimony to this fact is her design for space modules, which aptly address the paradigm shift in workplace concepts.

# Features of Green Homes



It is an International standard certification that ensures your green home has definite advantages over traditional homes.

- Building with environment-friendly, non-toxic material.
- Construction designs that adapt with surrounding nature.
- Sustainable use of natural resources.
- Better indoor air-quality.
- Emphasis on renewable resources, like solar power.
- Recycling and reusing domestic byproducts, such as used water.
- Low maintenance costs resulting in better living conditions.



Operational energy saving features



Natural ventilation



Optimum window to wall ratio (WWR)



Energy-Efficient walls



High thermal performance windows



Water saving features



Low flow water fixtures (taps, showerheads)



Low flow water closet



Waste water treatment & reuse



Embodied energy saving features



Low embodied energy materials (walls, floor & roof slab, flooring & window frames)



Reflective roof



Rain water harvesting

**SIGNATURE GLOBAL CITY 63A**  
SECTOR 63A, GURUGRAM



## LOCATION MAP

MAP SHOWN HERE IS BASED UPON  
GOOGLE MAPS

### CONNECTIVITY

- Well connected to Golf Course Road, Sohna Road, NH-8, Gurugram and Faridabad Road
- 1.5 KM from the proposed metro station
- 25 KM drive from Indira Gandhi International Airport
- 20 KM drive from Delhi
- 8 KM drive from HUDA City Centre metro station
- Close to Southern Peripheral Road
- Easy access to Delhi through Faridabad Road and MG Road
- The development of the much anticipated Delhi-Mumbai Industrial Corridor shall also help in fueling the already booming infrastructure of this area
- Multiple business hubs and Kadarpur CRPF Camp is in close proximity
- Cycling distance from Capital Cyberspace, Sector-59, Gurugram

### CLOSE PROXIMITY TO SOME MODERN CONVENIENCES:

- St. Johannes International School
- VIBGYOR High School
- Shiksha Bharti Public School
- The Shriram Millennium School
- DPS International
- St. Xavier's High School
- Super-specialty hospitals (Medanta/Max/Fortis/Artemis/Paras)
- Multiplexes, shopping malls, hotels



Gift your Loved ones the Joy of  
Signature Life, as Precious as Solitaire.



Drive in to the Solitaire of Gurugram's Realty.



Get Your Designer Home.  
At one-of-a-kind Landscape.

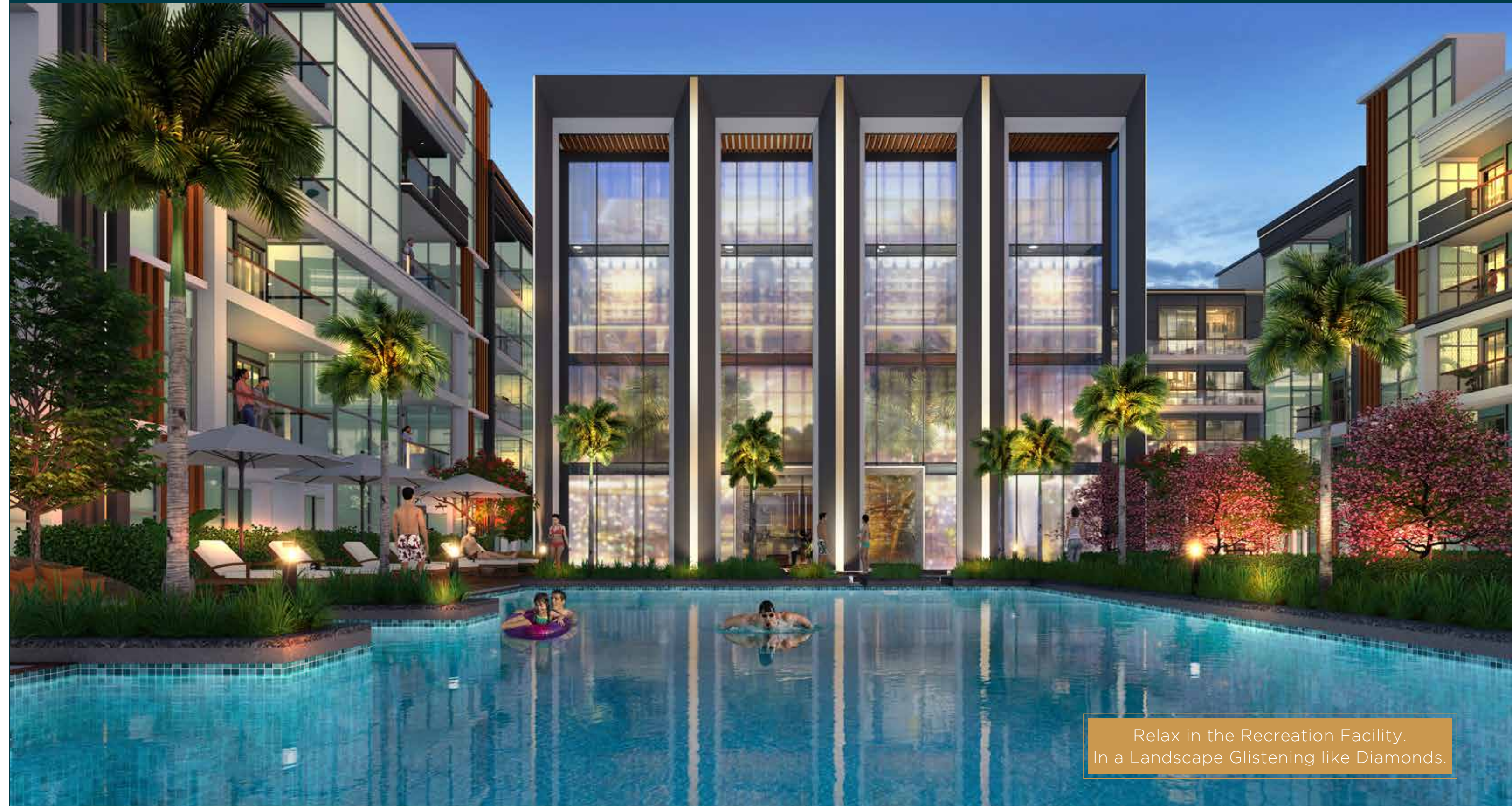




Add the Colour of Nature  
to the Uniquely Luxurious Life.



Enjoy a New Wave of Living.  
In a Sparkling Pool.



Relax in the Recreation Facility.  
In a Landscape Glistening like Diamonds.



Enjoy the Perfect Blend of Luxury and Health; for a Holistic Living.



Take off on the Swings. Create Special Memories.



A Place Where Kids can Have all the Fun.



Celebrate the Beauty of Life, in a Beautifully Sculpted Landscape.



A Place Dedicated to all your Shopping Needs.



A Shopping Arcade for an upscale experience.



There is something splendid for everyone



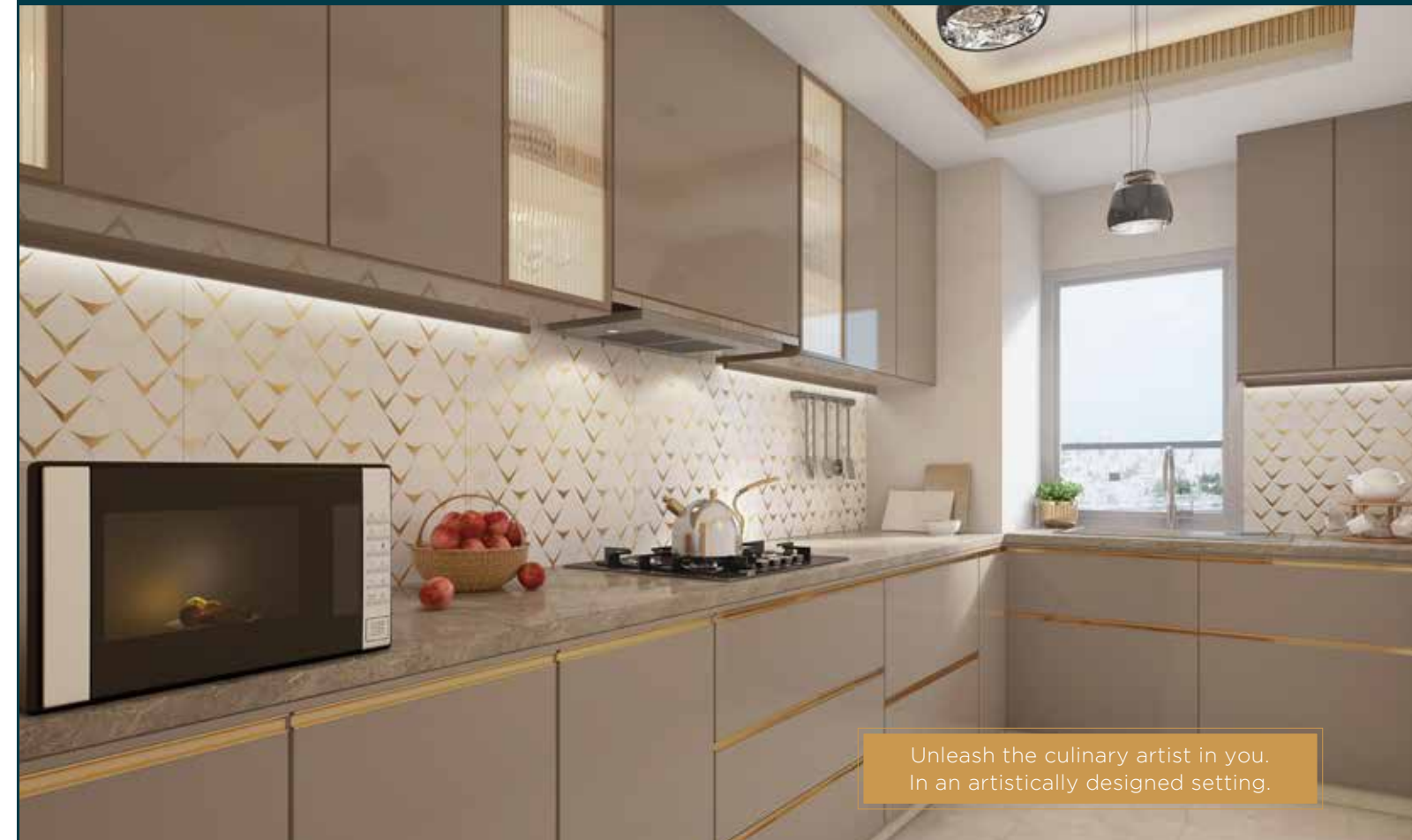
A Landscape for Shopping, Socializing, Leisure and Relaxation.



Welcome your guests with style and elegance.



Making your inner sanctum the ultimate style statement.

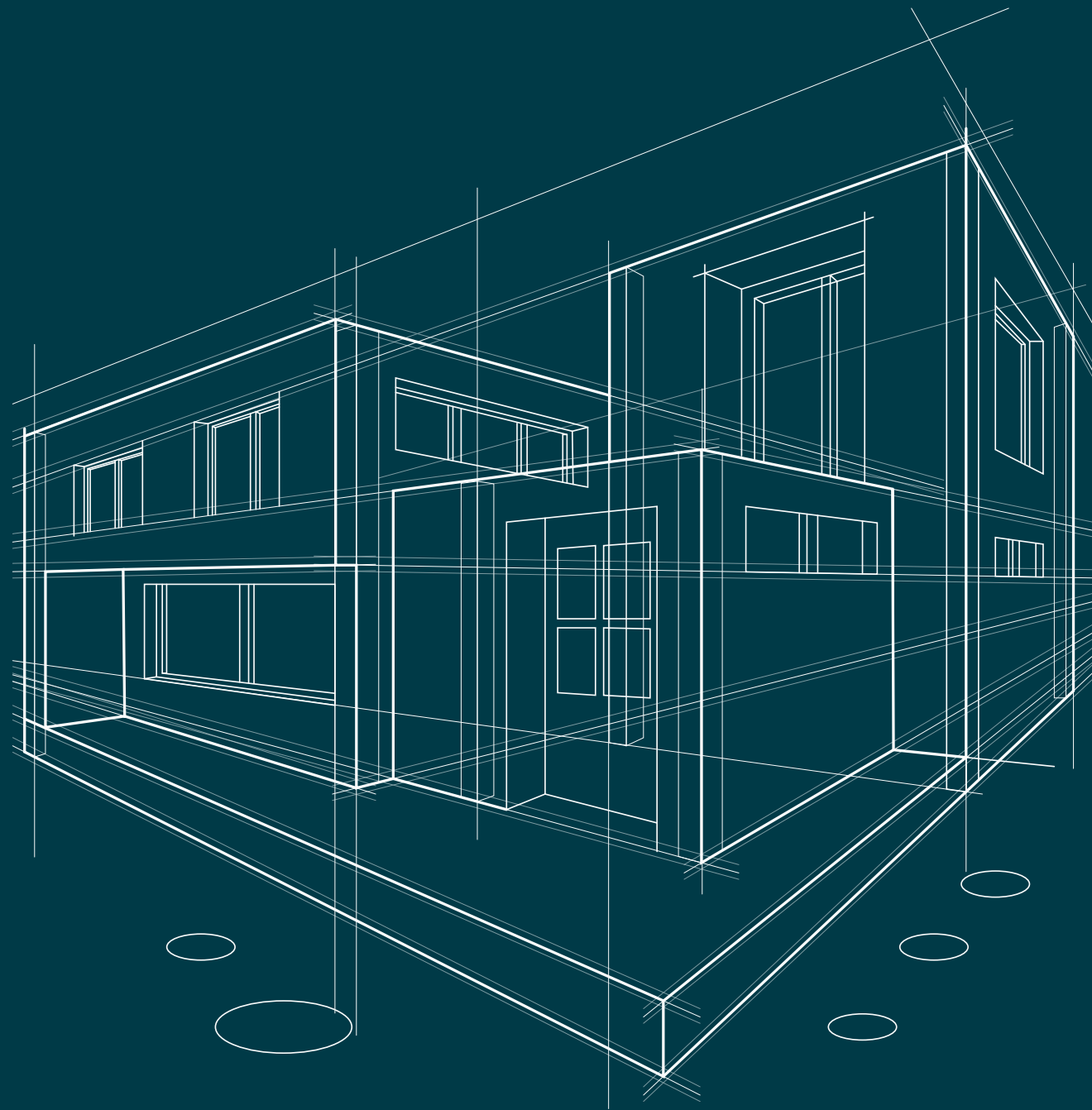


Unleash the culinary artist in you. In an artistically designed setting.



A niche of your own. Where you can be close to work, while at home.

# SMART FEATURES OF A SMART HOME\*



Secured Gated Community with Smart Visitor Management system.

Provision for home Automation\*\* & FTTH (Fibre to The Home)



Virtual Concierge App

\*Some of the services mentioned will be available to our residents on chargeable basis.  
\*\* For Select services.



Wi-Fi Enabled Areas



Electric Car Charging Stations



Video Door Phone



Digital Door Lock



Cyber Lounge



Laundromat



HVAC VRV



Modular Kitchen





FINE DINING



VIRTUAL REALITY ZONE



TERRACE LOUNGE BAR



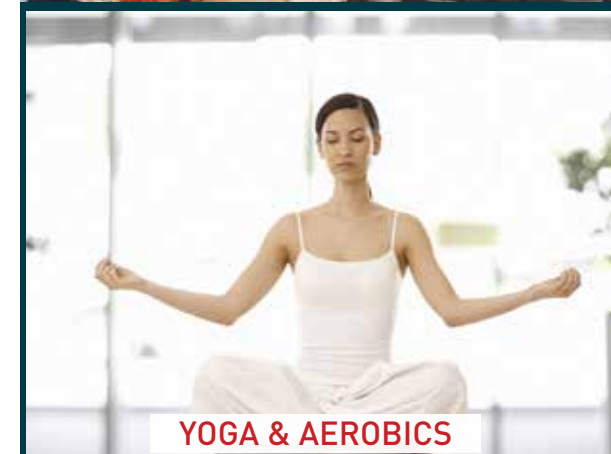
SALON



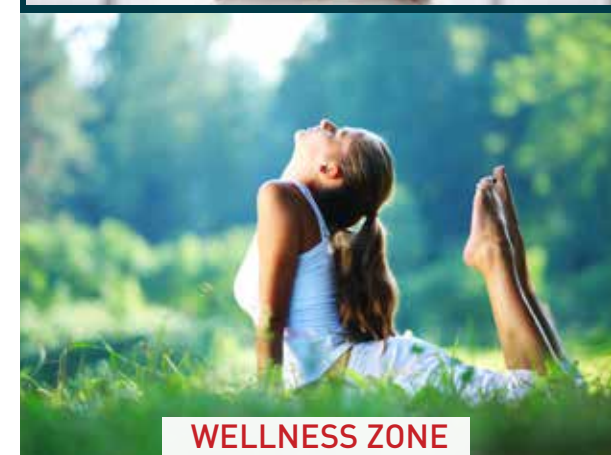
RESIDENT DOCTOR



SPA



YOGA & AEROBICS



WELLNESS ZONE



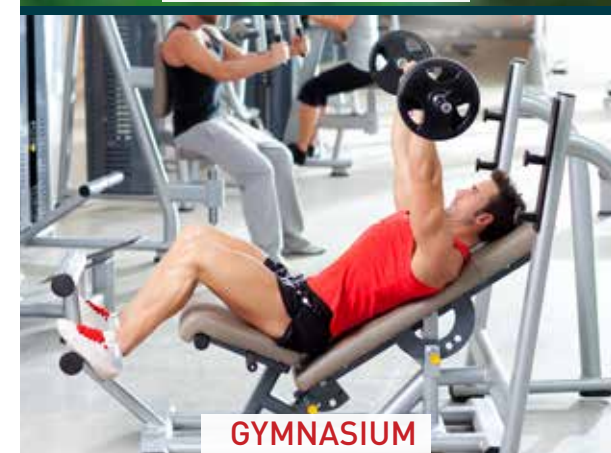
# GREAT AMENITIES FOR GREATER EXPERIENCES



RECREATIONAL AREA



WORK SPACE



GYMNASIUM



KID'S ZONE



INDOOR GAMES



MULTI PURPOSE HALL



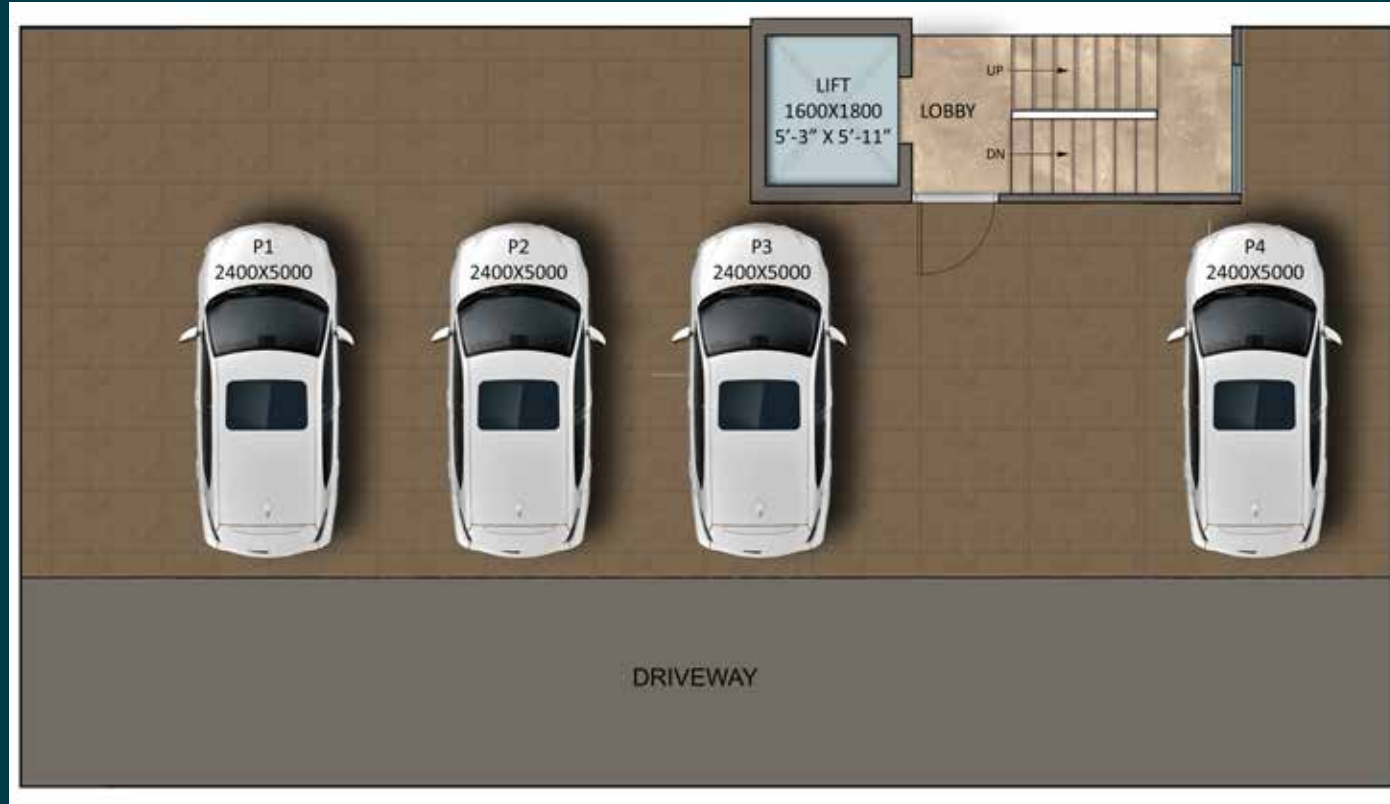
E-LIBRARY



MEETING ROOM

# TYPE A

## 3BHK + 3 TOILET + POOJA ROOM



STILT FLOOR PLAN



BASEMENT PLAN

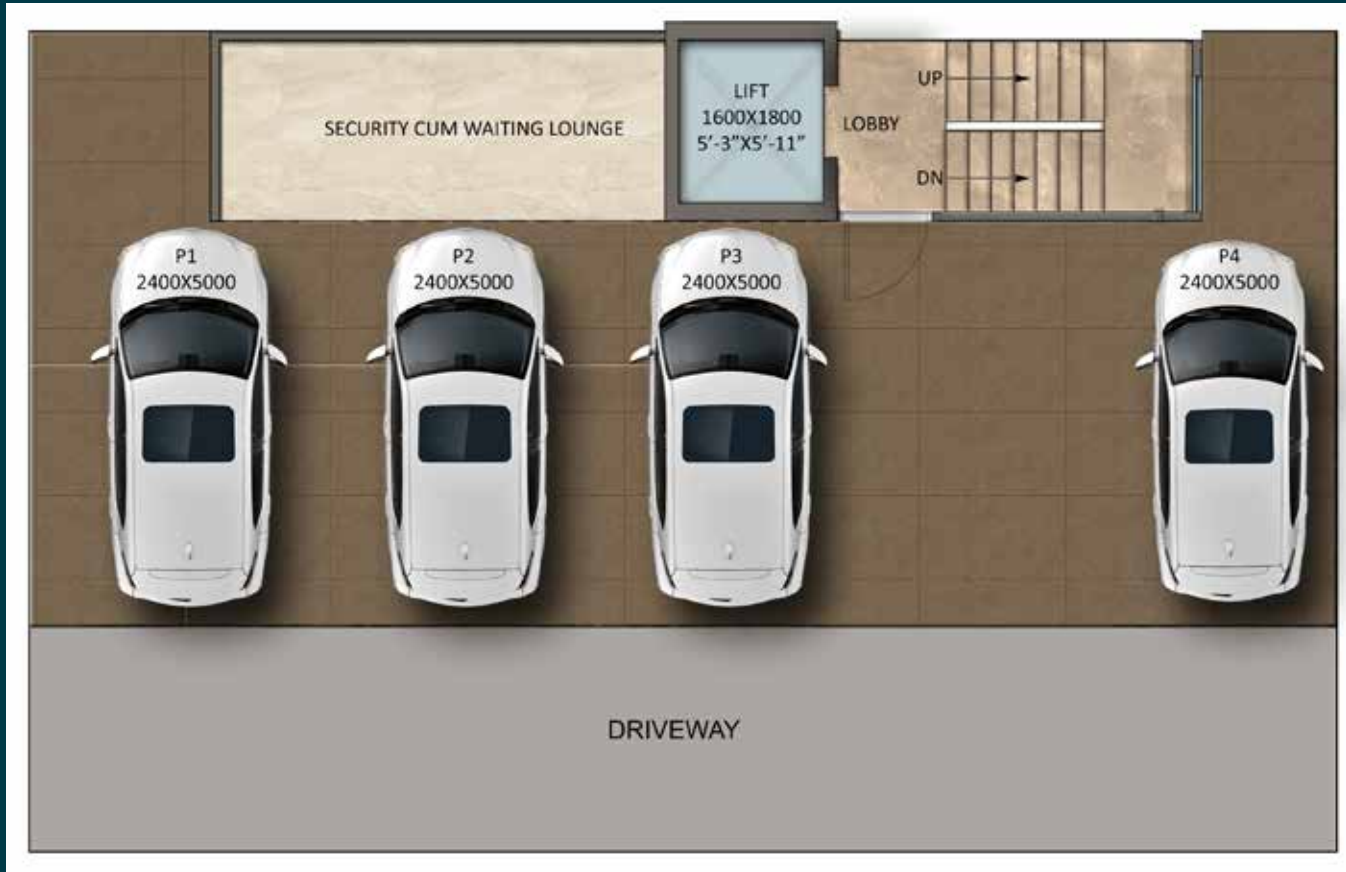


TERRACE FLOOR PLAN



1<sup>ST</sup> TO 4<sup>TH</sup> FLOOR PLAN

**TYPE B**  
**3BHK + 3 TOILET**



STILT FLOOR PLAN



TERRACE FLOOR PLAN



BASEMENT PLAN



1<sup>ST</sup> TO 4<sup>TH</sup> FLOOR PLAN

# TYPE C

## 2BHK + 2 TOILET



STILT FLOOR PLAN



TERRACE FLOOR PLAN

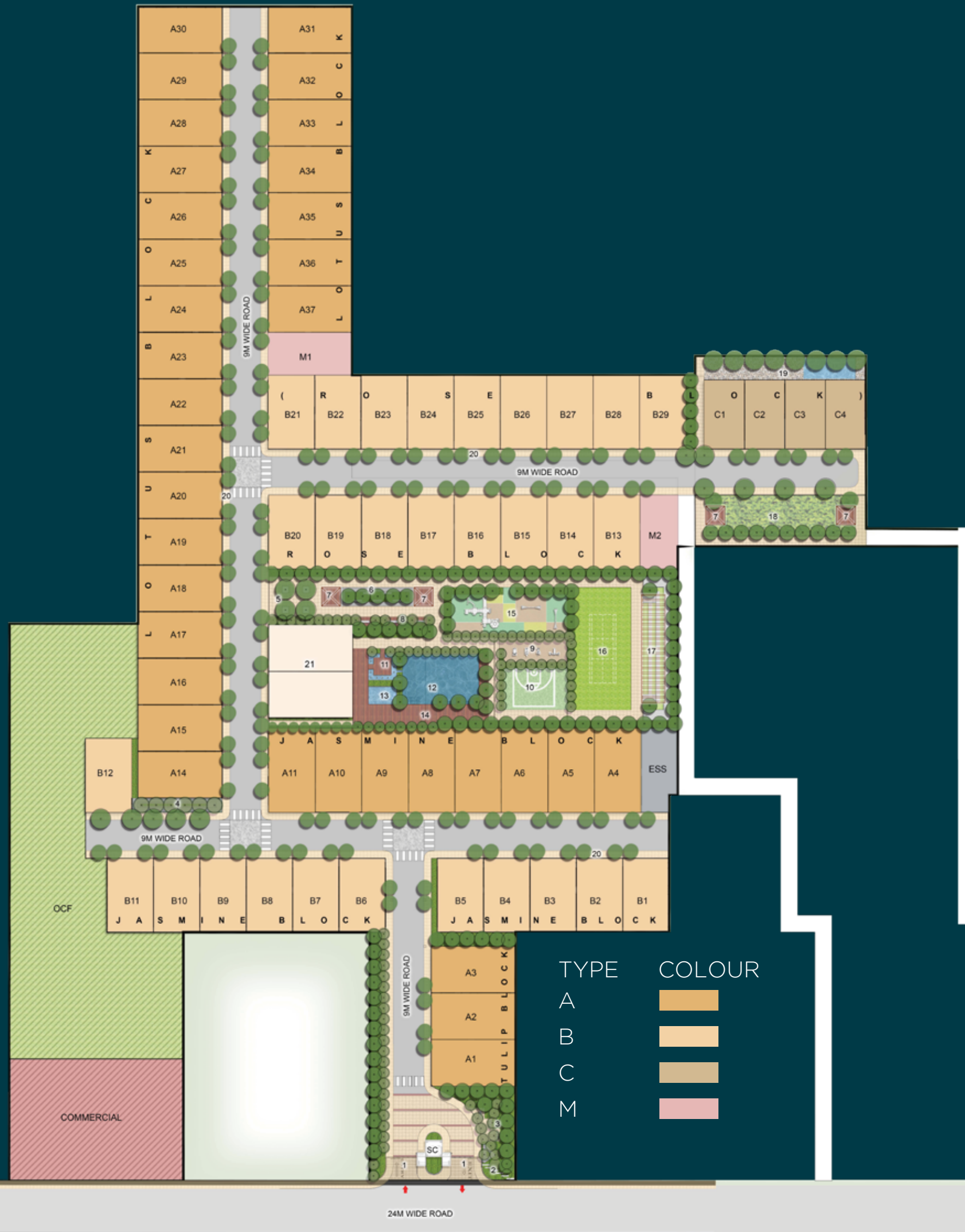
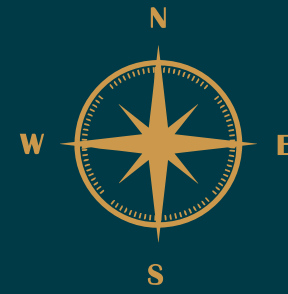


BASEMENT PLAN



1<sup>ST</sup> TO 4<sup>TH</sup> FLOOR PLAN

# SITE PLAN



## AMENITIES

1. ENTRY/ EXIT PORTAL
2. BRANDING WALL
3. BUS/ TAXI DROPOFF AREA
4. REFLEXOLOGY GARDEN
5. TREE COURT
6. SENIOR CITIZEN AREA
7. GAZEBO
8. SEATING PLAZA
9. OPEN GYM
10. BASKETBALL PLAY COURT
11. DECK WITH BUBBLERS
12. SWIMMING POOL
13. KIDS POOL
14. POOLSIDE DECK
15. KIDS PLAY AREA
16. MULTI PLAY LAWN
17. AMPHITHEATER WITH PERGOLA
18. FRAGRANCE / BUTTERFLY GARDEN
19. PETS PARK / SPLASH POOL
20. 1.75 M WIDE PATHWAY
21. RECREATION AREA



Sr. No.	BLOCK TYPE	BLOCK NO.	PLOT TYPE	PLOT NO.	UN-FROZEN
1	TULIP	A1	A	A1	UN-FROZEN
2	TULIP	A2	A	A2	UN-FROZEN
3	TULIP	A3	A	A3	UN-FROZEN
4	JASMINE	B1	B	B1	UN-FROZEN
5	JASMINE	B2	B	B2	UN-FROZEN
6	JASMINE	B3	B	B3	UN-FROZEN
7	JASMINE	B4	B	B4	UN-FROZEN
8	JASMINE	B5	B	B5	UN-FROZEN
9	JASMINE	B6	B	B6	UN-FROZEN
10	JASMINE	B7	B	B7	UN-FROZEN
11	JASMINE	B8	B	B8	UN-FROZEN
12	JASMINE	B9	B	B9	UN-FROZEN
13	JASMINE	B10	B	B10	UN-FROZEN
14	JASMINE	B11	B	B11	UN-FROZEN
15	JASMINE	B12	B	B12	UN-FROZEN
16	JASMINE	A4	A	A4	UN-FROZEN
17	JASMINE	A5	A	A5	UN-FROZEN
18	JASMINE	A6	A	A6	UN-FROZEN
19	JASMINE	A7	A	A7	UN-FROZEN
20	JASMINE	A8	A	A8	UN-FROZEN
21	JASMINE	A9	A	A9	UN-FROZEN
22	JASMINE	A10	A	A10	UN-FROZEN
23	JASMINE	A11	A	A11	UN-FROZEN
24	RECREATIONAL AREA	A12	A	A12	UN-FROZEN
25	RECREATIONAL AREA	A13	A	A13	UN-FROZEN
26	LOTUS	A14	A	A14	UN-FROZEN
27	LOTUS	A15	A	A15	UN-FROZEN
28	LOTUS	A16	A	A16	UN-FROZEN
29	LOTUS	A17	A	A17	UN-FROZEN
30	LOTUS	A18	A	A18	UN-FROZEN
31	LOTUS	A19	A	A19	UN-FROZEN
32	LOTUS	A20	A	A20	UN-FROZEN
33	LOTUS	A21	A	A21	UN-FROZEN
34	LOTUS	A22	A	A22	UN-FROZEN
35	LOTUS	A23	A	A23	UN-FROZEN
36	LOTUS	A24	A	A24	UN-FROZEN

**BLOCK NUMBERING PLAN**

Sr. No.	BLOCK TYPE	BLOCK NO.	PLOT TYPE	PLOT NO.	UN-FROZEN
37	LOTUS	A25	A	A25	UN-FROZEN
38	LOTUS	A26	A	A26	UN-FROZEN
39	LOTUS	A27	A	A27	UN-FROZEN
40	LOTUS	A28	A	A28	UN-FROZEN
41	LOTUS	A29	A	A29	UN-FROZEN
42	LOTUS	A30	A	A30	UN-FROZEN
43	LOTUS	A31	A	A31	UN-FROZEN
44	LOTUS	A32	A	A32	UN-FROZEN
45	LOTUS	A33	A	A33	UN-FROZEN
46	LOTUS	A34	A	A34	UN-FROZEN
47	LOTUS	A35	A	A35	UN-FROZEN
48	LOTUS	A36	A	A36	UN-FROZEN
49	LOTUS	A37	A	A37	UN-FROZEN
50	LOTUS	M1	M	M1	UN-FROZEN
51	ROSE	M2	M	M2	UN-FROZEN
52	ROSE	B13	B	B13	UN-FROZEN
53	ROSE	B14	B	B14	UN-FROZEN
54	ROSE	B15	B	B15	UN-FROZEN
55	ROSE	B16	B	B16	UN-FROZEN
56	ROSE	B17	B	B17	UN-FROZEN
57	ROSE	B18	B	B18	UN-FROZEN
58	ROSE	B19	B	B19	UN-FROZEN
59	ROSE	B20	B	B20	UN-FROZEN
60	ROSE	B21	B	B21	UN-FROZEN
61	ROSE	B22	B	B22	UN-FROZEN
62	ROSE	B23	B	B23	UN-FROZEN
63	ROSE	B24	B	B24	UN-FROZEN
64	ROSE	B25	B	B25	UN-FROZEN
65	ROSE	B26	B	B26	UN-FROZEN
66	ROSE	B27	B	B27	UN-FROZEN
67	ROSE	B28	B	B28	UN-FROZEN
68	ROSE	B29	B	B29	UN-FROZEN
69	ROSE	C1	C	C1	UN-FROZEN
70	ROSE	C2	C	C2	UN-FROZEN
71	ROSE	C3	C	C3	UN-FROZEN
72	ROSE	C4	C	C4	UN-FROZEN

**BLOCK NUMBERING PLAN**

# SPECIFICATIONS

## DRAWING / DINING ROOM



**FLOOR**  
MARBLE FLOORING



**CEILING**  
ACRYLIC EMULSION PAINT/  
OIL BOUND DISTEMPER



**WALL**  
ACRYLIC EMULSION

## BALCONIES



**FLOOR**  
ANTI-SKID / MATT  
FINISH CERAMIC TILES



**RAILING**  
GLASS RAILING

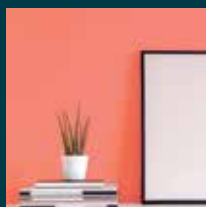
## BEDROOM



**FLOOR**  
LAMINATED WOODEN  
FLOOR



**CEILING**  
ACRYLIC EMULSION PAINT/  
OIL BOUND DISTEMPER



**WALL**  
ACRYLIC EMULSION

## TERRACE



BRICKBAT COBA OR  
WATER PROOFING TREATMENT

## KITCHEN



**FLOOR**  
VITRIFIED /  
CERAMIC TILES



**WALL / CEILING**  
ACRYLIC EMULSION PAINT/  
OIL BOUND DISTEMPER



**DADO**  
CERAMIC TILES 600 MM  
ABOVE THE COUNTER



**COUNTER TOP**  
GRANITE STONE

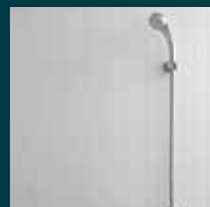


**FITTINGS & FIXTURES**  
ISI MARKED CP FITTINGS  
& SS SINK

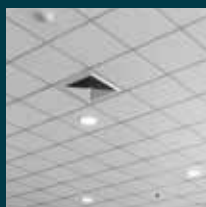
## TOILET & BATH



**FLOOR**  
ANTI-SKID  
CERAMIC TILES



**WALL**  
CERAMIC TILES TILL  
4 FEET / 7'-0" FEET



**CEILING**  
GRID FALSE CEILING



**FITTINGS & FIXTURES** ISI MARKED  
CP FITTINGS, WC & WASHBASIN

## DOORS & WINDOWS



**MAIN / INTERNAL  
DOOR FRAME**  
HARD WOOD / RED MERANTI



**INTERNAL DOOR SHUTTERS**  
BOTH SIDE LAMINATED DOORS



**EXTERNAL DOORS & WINDOWS**  
UPVC/ALUMINIUM POWDER  
COATED

## ELECTRICAL



**WIRING**  
COPPER ELECTRICAL WIRING  
THROUGHOUT IN CONCEALED  
CONDUIT FOR LIGHT POINTS



**SWITCHES / SOCKET**  
ISI MARKED SWITCHES  
& SOCKETS

## EXTERNAL DEVELOPMENT



**INTERNAL ROADS**  
INTERLOCKING BLOCKS/  
TREMIX CONCRETE ROAD



**BOUNDARY WALL**  
RCC / BRICK WALL  
WITH PLASTER &  
EXTERNAL WEATHER  
PROOF PAINT FINISH



**EXTERNAL PAINT**  
WEATHER PROOF TEXTURE  
PAINT IN BUILDINGS

## STRUCTURE



**EARTHQUAKE RESISTANT**  
RCC FRAMED STRUCTURE  
AS PER SEISMIC ZONE

# BEST BRANDS FOR THE BEST EXPERIENCE

### TILES

**Kajaria**

**VARMORA**

**orientbell**

### PAINTS

**asianpaints**

**Dulux**

**Berger**

### DOOR LOCKS & HANDLES

**Dorsët**

**OZONE**

**Godrej**

### GLASS

**SAINT-GOBAIN**

**AIS**

Asahi India Glass Ltd.

### ALUMINIUM DOORS & WINDOW PROFILES

**SCHÜCO**

**TECHNAL**

### CP BATH FITTINGS

**Jaquar**

**KOHLER**

### LIFTS

**OTIS**

**KONE**

**Schindler**

### CHIMNEY AND HOB

**elica**

**FABER**

### HVAC VRV

**DAIKIN**

**VOLTAS**

A TATA Enterprise

### SWITCHES

**legrand**

**OSUM**

**wipro**

**NORTH-WEST**

### WOODEN DOORS

**Bhutan tuff**

**rama ply**

### KITCHEN SINK

**Jayna**

**CARYSIL**

German Engineered

### WIRES & CABLES

**Finolex**

**HAVELLS**

**POLYCAB**

Connective. Zingest. All.

### LIGHTING

**wipro**

**OSRAM**

**PHILIPS**

### SANITARY FITTINGS

**Jaquar**

**KOHLER**

**hindware**

Start with the expert

Note : Flooring in mix design of marble, granite and tile. Accordingly, variations in shade and/ or size and/ or colour and/ or design of the tiles, motifs, mica etc. may occur.

All products, names, logos, brands, trademarks are properties of their respective owners. Product of other companies may also be used. However, priority will be given to the aforesaid brands/companies.



# ABOUT SIGNATURE GLOBAL

We, at Signature Global, believe in the policy of transparency. Though we have created our own distinct identity in the field of real estate, we are working more passionately to maintain and improve our reach in the sector. We emphasize on the core values of reliability, responsibility and global standards with regard to the International Real Estate realm.

The group has outlined its vision for 'India of Tomorrow' with a mission of 'Har Parivar ek Ghar' (a home for every family). With a vision to redefine the current conventions of Indian real estate development by championing excellence in craftsman, planning and service, the company has successfully launched affordable housing projects; all in the prime locations including Gurugram, Sohna and Karnal in Haryana and commercial malls focussing on the interest of customers in Vaishali, Ghaziabad, Uttar Pradesh and Sohna, South of Gurugram. The company has successfully delivered Signature Global Solera, Synera, Andour Heights, Grand IVA, Orchard Avenue, Solera 2, The Serenas, Roselia 2 and Signature Global Park 2&3\* in Gurugram and offered possession of Signature Global Sunrise in Karnal months before the expected time of delivery.

Each residential project is complimented with one branded retail hub christened as Signum. The hallmark of these projects are ideal location, impeccable quality of construction with excellent amenities at reasonable prices. They are unique in terms of planning, design, quality, workmanship, transparency, customer delight and service. We have ushered in best global practices of transparency and professionalism, with 'think global, act local' approach, doing product development as per the needs of our valued consumers. We have introduced highly advanced global green building certification IGBC, which provides a solution to capitalize on the value of green buildings by promoting benefits to customers while protecting environment.

We are deploying cutting edge technology and best project management techniques to achieve scale and efficiency to boost affordability. Signature Global works with a team of experienced architects, master planners and designers who are among the best in the industry. We had partnered with several leading National and International institutions like IFC (a sister organization of the World Bank and a member of the World Bank Group), HDFC CAPITAL, ICICI Prudential etc. and takes pride in growing its reach to customers by seeking direct online applications.

Leading a team of highly enthusiastic professionals is always an enjoyable task. The same becomes even more motivating when the society starts recognizing and rewarding your efforts. In the last couple of years, we have won several awards from prestigious media houses for our outstanding contribution to the real estate.

- 'Haryana's Icons' and 'Emerging Developer' by Times of India.
- 'Business Leaders in Affordable Housing' by ASSOCHAM.

- 'Best LIG Housing Project' for Solera by PMAY Empowering India, 2019.
- 'Electronic Media Campaign of the Year' and 'Sustainable Business Leader of the Year' by Realty Plus, 2019.
- 'Affordable Housing Project of the Year' for Synera at 12th 'Realty+ Awards
- 'Developer of the Year', Residential and Digital Media Campaign of the Year' in 2020 at 12th 'Realty+ Awards
- 'The Developer of Affordable Housing of the Year Award' by ASSOCHAM at 'Realty and Sustainability Confluence and Awards', 2020.
- 13th Annual Estate Awards 2021, Affordable Housing Property of the Year - (National) Golf Greens-79
- 13th Annual Estate Awards 2021, Best Affordable / Budget Housing Developer of the Year - Residential (National)
- 'Developer of the Year - Residential at the 13th 'Realty+ Excellence Awards', 2021, NORTH.
- 'The Business Leadership Awards', 2021, under 'Brand Excellence in Real Estate and Construction' category.
- 'Excellence in Indian Real Estate' award at 'UDAAN - Dare to Dream' by Zee Hindustan.
- 'Sustainable Business Leader of the Year' to Mr. Pradeep Aggarwal at the 13th 'Realty+ Excellence Awards', 2021, NORTH.
- 'Affordable Housing Project of the Year' to Grand IVA and 'Project Launch of the Year' to Signature Global City 37D at the 13th 'Realty+ Excellence Awards', 2021, NORTH.
- 'The 8th IGBC Green Championship Awards' under the category of 'Developer Leading the Green Affordable Housing Movement in India'.
- India's Most Sustainable Companies Published in the 2nd edition of BW BusinessWorld in association with Sustain Labs Paris
- Real Estate - Affordable Housing Developer of the year by Times Business Awards North 2022

Recently, we have been honoured by Directorate of Town and Country Planning (DTCP) and Haryana Real Estate Regulatory Authority (HARERA), Panchkula and Gurugram, with the following awards:

- Falcitated for delivery of affordable housing Project within a three-year period, after obtaining occupancy certificate; Presented by Sh. Manohar Lal Khattar, Hon'ble Chief Minister of Haryana.
- Falcitated for completion of Ddjay project within a record time frame of less than one and a half years; Presented by Sh. Manohar Lal Khattar, Hon'ble Chief Minister of Haryana.
- Mr. Pradeep Aggarwal awarded as Real Estate Person of the Year and Signature Global as Real Estate Company of the Year by Construction Week India Awards 2022.

We have also got ISO 9001:2015; 14001:2015; 45001:2018 Certification. We are indeed proud of our achievements and thankful to our highly enthusiastic professionals for their immense support.

\*Started giving possession of Phase 1

