

RERA REGISTRATION NO.: RC/REP/HARERA/GGM/470/202/2021/38
RC/REP/HARERA/GGM/471/203/2021/39
(www.haryanarera.gov.in)

ASCEND TO THE **SIGNATURE** — LIFE —

 **SIGNATURE
GLOBAL CITY 92**
SECTOR 92 GURUGRAM



AN ISO 9001:2015; 14001:2015; 45001:2018 CERTIFIED COMPANY

SIGNATURE INFRABUILD PRIVATE LIMITED | CIN NO. : U70100DL2013PTC247676

REGD. OFFICE: 13TH FLOOR, 28 BARAKHAMBA, ROAD, CONNAUGHT PLACE, NEW DELHI - 110001

CORP. OFFICE: GROUND FLOOR, TOWER-A, SIGNATURE TOWER, SOUTH CITY-1, GURUGRAM, HARYANA- 122001

www.signatureglobal.in

DISCLAIMER :

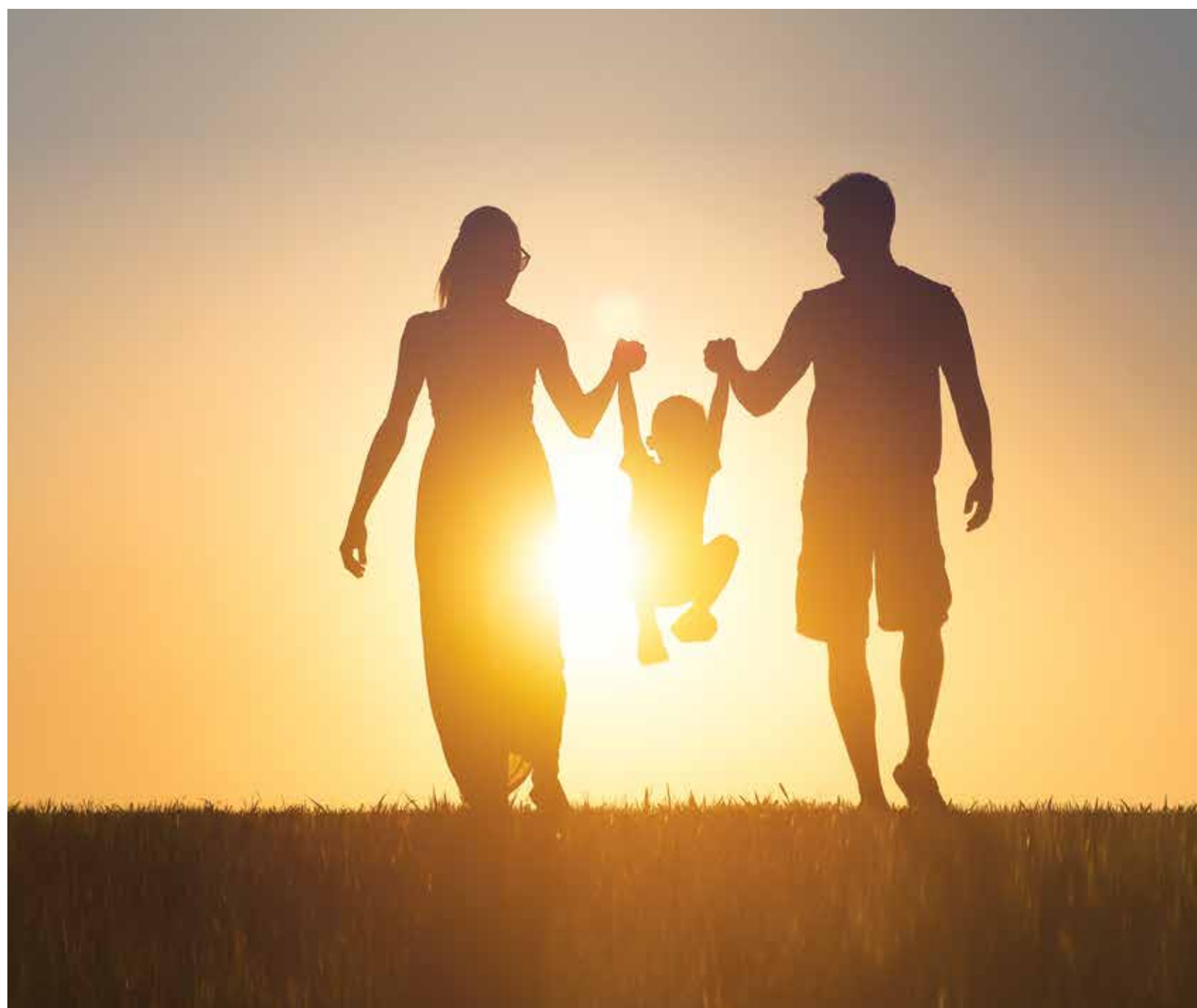
PROMOTER URGES EVERY APPLICANT TO INSPECT THE PROJECT SITE AND SHALL NOT MERELY RELY UPON OR TO BE INFLUENCED BY ANY ARCHITECTURAL IMPRESSION, PLAN OR SALES BROCHURE AND, THEREFORE, REQUESTED TO MAKE PERSONAL JUDGMENT PRIOR TO SUBMITTING AN APPLICATION FOR ALLOTMENT. THE PROJECT IS BEING DEVELOPED IN PHASES, HENCE, CERTAIN FACILITIES/AMENITIES ETC. MAY BE USED BY ALLOTTEE OF OTHER PHASES, UNLESS OTHERWISE STATED, ALL THE IMAGES, VISUALS, MATERIALS AND INFORMATION CONTAINED HEREIN ARE PURELY CREATIVE/ARTISTIC AND MAY NOT BE ACTUAL REPRESENTATIONS OF THE PRODUCTS AND/OR ANY AMENITIES, FURTHER, THE ACTUAL DESIGN MAY VARY IN THE FIT AND FINISHED FORM THE ONE DISPLAYED ABOVE. PROJECT DETAILS / SPECIFICATIONS CAN ALSO BE ACCESSED AT THE OFFICE OF HARYANA REAL ESTATE REGULATORY AUTHORITY WEBSITE [HTTPS://HARYANARERA.GOV.IN/](https://haryanarera.gov.in/). JOURNEY TIME SHOWN, IF ANY, IS BASED UPON GOOGLE MAPS, WHICH MAY VARY AS PER THE TRAFFIC AT A RELEVANT POINT OF TIME.

RATES MENTIONED DO NOT INCLUDE GST AND OTHER STATUTORY CHARGES, IF APPLICABLE. T & C APPLY. 1 SQ. MTR. = 10,7639 SQ. FT.

FOR ANY QUERY PLEASE SPEAK TO OUR CUSTOMER RELATIONSHIP MANAGER



DESIGNED BY PADMA BHUSHAN ARCHITECT HAFEEZ CONTRACTOR

The logo for Signature Global City 92. It features a green circular icon with a white stylized 'S' on the left. To the right, the text 'SIGNATURE GLOBAL CITY 92' is displayed in a bold, sans-serif font. 'SIGNATURE' and 'GLOBAL' are in black, 'CITY' is in red, and '92' is in green. A yellow house-shaped icon is positioned above the word 'CITY'. Below the main text, 'SECTOR 92 GURUGRAM' is written in a smaller, spaced-out, black font.

**SIGNATURE
GLOBAL CITY 92**
SECTOR 92 GURUGRAM

Rediscover a good lifestyle in 10.30 acres; enjoy a well-connected life with proximity to major highways. This is where you can meet and entertain your guests at a specially curated Private Service Area. This residential complex is an epitome of green building; constructed with eco-friendly processes and practices. Here, rejuvenate in nature's freshness; enjoy a touch of serenity and peace in the society. To make your life comfortable and hassle-free here, world class amenities are provided along with high-end security.





LOCATION MAP

HOSPITALS

Aarvy Hospital
 Krishna Hospital
 Global Hospital & Trauma Centre
 ARC Multispeciality hospital

CONNECTIVITY

Dwarka Expressway
 Hero Honda Chowk
 Kherki Daula, NH-8
 Airport
 IMT Manesar
 Railway Station
 Bus Terminal
 Proposed Metro

SCHOOLS

RPS International School
 Yaduvanshi Shiksha Niketan
 Pranavananda International School
 Sanskar Jyoti School

HOTELS

Hyatt Regency
 Heritage Village Spa & Resort
 ITC Grand Bharat
 Karma Lake Lands





GREAT FEATURES AROUND THE PROJECT

- Sector 92 enjoys its proximity to key employment hubs of the city like Cyber City, Udyog Vihar, Golf Course Extension Road, Sohna, Manesar, etc.
- Major industrial employment centre of Manesar is in close proximity.
- Kadipur industrial area is in close vicinity.
- Moreover, there is easy connectivity to the city's employment hubs through Pataudi Road, NH8, Dwarka Expressway, Western Peripheral Expressway and Southern Peripheral Road. Another point about this sector which makes it an ideal residential destination is strong social infrastructure in the neighbourhood and proposed metro line.
- The sector has witnessed development of several residential projects in the vicinity.
- Residential projects in these places are ideal for those who choose to surround themselves by abundant greenery with the soothing sound of nature.
- Well established network of Schools like Ipsaa: Pre-school, Pranavananda International School, Rao Bharat Singh Intl School, Hospitals like Genesis Hospital, Medeor Hospital, Manesar, ESIC Hospital, Manesar, Medanta Medicity, Shopping Malls, Retail Markets and Five Star Hotels.
- The sector has witnessed good returns in terms of rent because it has an ideal location for the people who are always on the move and work in the private and retail sectors.
- Easy access to international airport via NH-8 and Dwarka Expressway





SIGNATURE GLOBAL CITY 92


**ENJOY
AN URBAN LIFESTYLE,
IN THE LAP OF NATURE.**




**WALK UP
THE PATH TO AN
UPSCALE LIFE.**




**BIG ON SPACE,
FOR FUN AND GAMES.**



KIDS' PLAY AREA



**BADMINTON
COURT**

AMENITIES



DEDICATED LIFTS
FOR STILT+ 4 FLOORS



DEDICATED
CAR PARKING



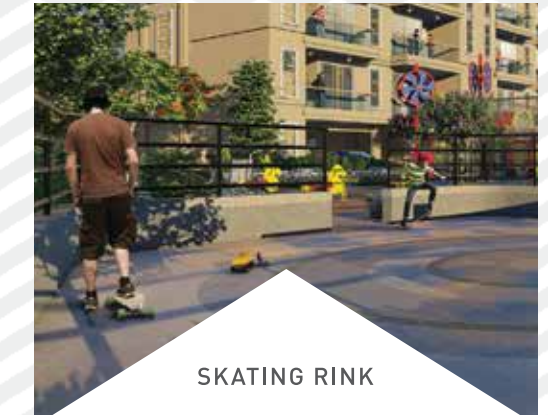
OUTDOOR GYM*



JOGGING TRACK



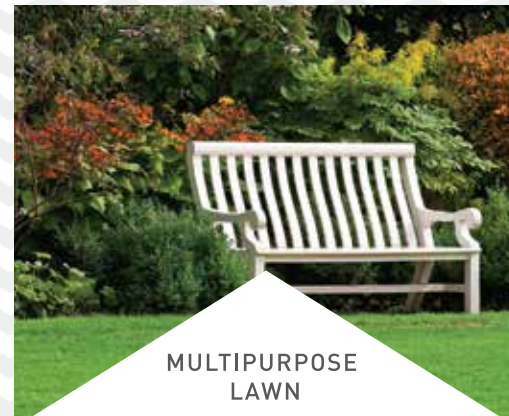
OPEN-AIR
AMPHITHEATRE*



SKATING RINK



BUTTERFLY
GARDEN*



MULTIPURPOSE
LAWN



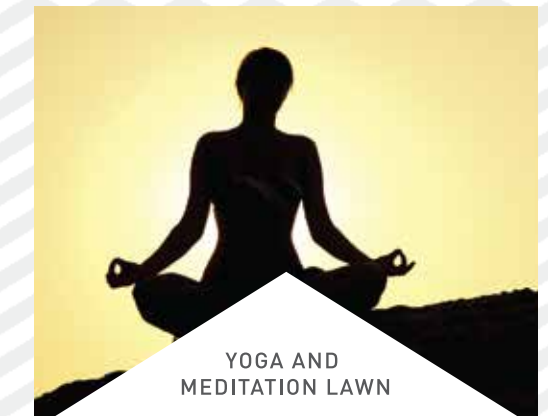
BADMINTON
COURT



SWIMMING POOL*



CLUBHOUSE*



YOGA AND
MEDITATION LAWN



HALF BASKETBALL
COURT



TODDLERS'
PLAY AREA



PET'S AREA*



CRICKET NET*



* FUTURE DEVELOPMENT IN PHASE 2

SPECIAL FEATURES



MODULAR KITCHEN



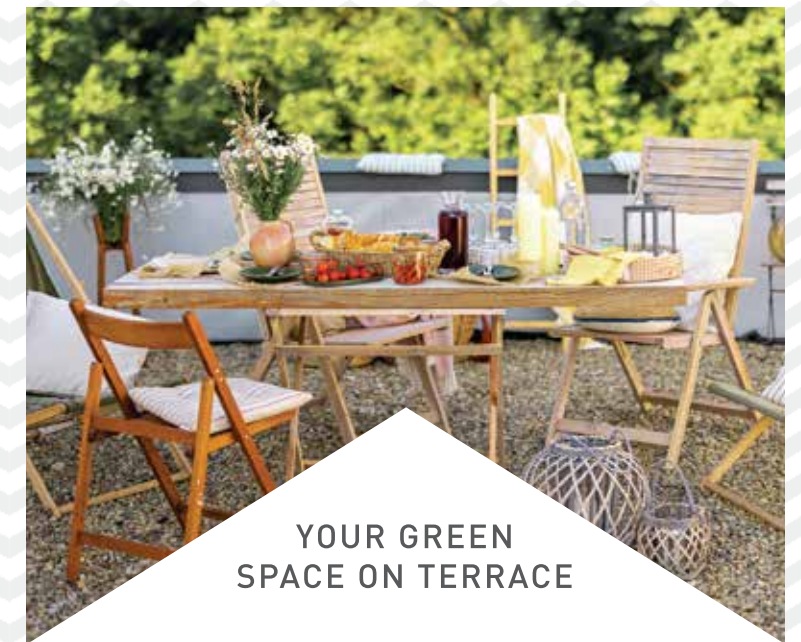
ADDITIONAL SPACE FOR WORK FROM HOME



FULLY AIR-CONDITIONED PREMIUM FLOOR



PRIVATE SERVICE AREA



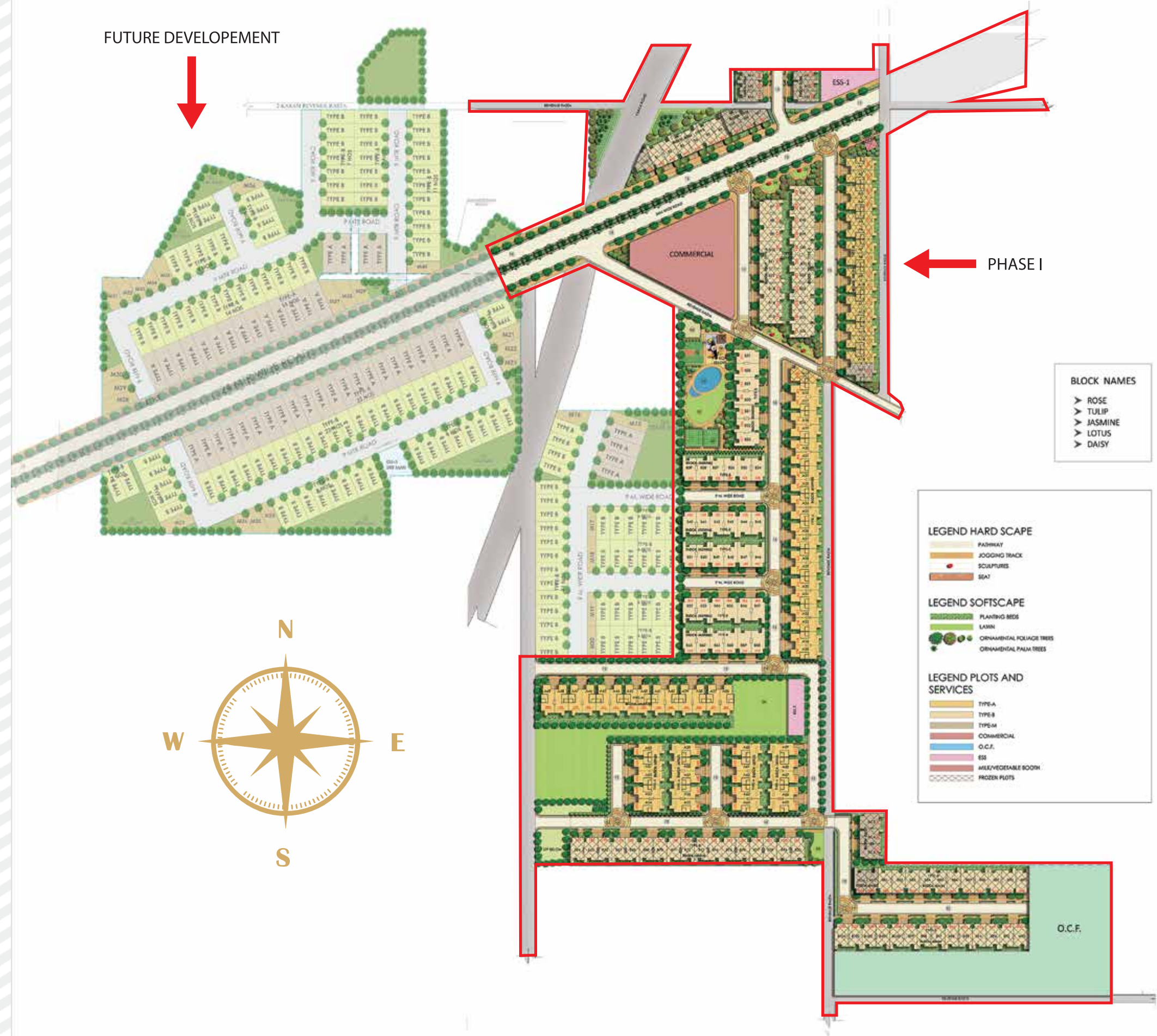
YOUR GREEN SPACE ON TERRACE



AMENITIES

- 01 KID'S PLAY AREA
- 02 BADMINTON COURT
- 03 SKATING RINK
- 04 HALF BASKET BALL COURT
- 05 JOGGING TRACK
- 06 PATHWAY
- 07 SHADED PAVILION
- 08 LAWN
- 09 SEATING AREA
- 10 REFLEXOLOGY GARDEN
- 11 PLANTER CUM SEATING
- 12 MOUNDS
- 13 DRIVEWAY
- 14 ACCENT PAVING

SITE PLAN



BLOCK NUMBERING PLAN

Sr. No.	BLOCK TYPE	BLOCK NO.	PLOT TYPE	PLOT NO.	FROZEN / UNFROZEN
1	ROSE	R01	M	M1	FROZEN
2	ROSE	R02	M	M2	FROZEN
3	ROSE	R03	M	M3	FROZEN
4	ROSE	R04	M	M4	FROZEN
5	ROSE	R05	M	M5	FROZEN
6	ROSE	R06	M	M6	FROZEN
7	ROSE	R07	M	M7	FROZEN
8	ROSE	R08	M	M8	FROZEN
9	ROSE	R09	M	M9	FROZEN
10	ROSE	R10	B	B6	FROZEN
11	ROSE	R11	B	B5	FROZEN
12	ROSE	R12	B	B4	FROZEN
13	ROSE	R13	B	B3	FROZEN
14	ROSE	R14	B	B2	FROZEN
15	ROSE	R15	B	B1	FROZEN
16	ROSE	R16	M	M10	FROZEN
17	TULIP	T03	A	A1	FROZEN
18	TULIP	T04	A	A2	FROZEN
19	TULIP	T05	A	A3	FROZEN
20	TULIP	T06	A	A4	FROZEN
21	TULIP	T07	A	A5	FROZEN
22	TULIP	T08	A	A6	FROZEN
23	TULIP	T09	A	A7	FROZEN
24	TULIP	T10	A	A8	FROZEN
25	TULIP	T11	A	A9	FROZEN
26	TULIP	T12	A	A10	FROZEN
27	TULIP	T13	A	A11	FROZEN
28	TULIP	T14	A	A12	FROZEN
29	TULIP	T15	A	A13	FROZEN
30	TULIP	T16	A	A14	FROZEN
31	TULIP	T17	A	A15	FROZEN
32	TULIP	T18	M	M11	FROZEN
33	TULIP	T19	B	B26	FROZEN
34	TULIP	T20	B	B25	FROZEN
35	TULIP	T21	B	B24	FROZEN
36	TULIP	T22	B	B23	FROZEN
37	TULIP	T23	B	B22	FROZEN
38	TULIP	T24	B	B21	FROZEN
39	TULIP	T25	B	B20	FROZEN
40	TULIP	T26	B	B19	FROZEN
41	TULIP	T27	B	B18	FROZEN

Sr. No.	BLOCK TYPE	BLOCK NO.	PLOT TYPE	PLOT NO.	FROZEN / UNFROZEN
42	TULIP	T28	B	B17	FROZEN
43	TULIP	T29	B	B16	FROZEN
44	TULIP	T30	B	B7	FROZEN
45	TULIP	T31	B	B8	FROZEN
46	TULIP	T32	B	B9	FROZEN
47	TULIP	T33	B	B10	FROZEN
48	TULIP	T34	B	B11	FROZEN
49	TULIP	T35	B	B12	FROZEN
50	TULIP	T36	B	B13	FROZEN
51	TULIP	T37	B	B14	FROZEN
52	TULIP	T38	B	B15	FROZEN
53	JASMINE	J01	A	A16	UNFROZEN
54	JASMINE	J02	A	A17	UNFROZEN
55	JASMINE	J03	A	A18	UNFROZEN
56	JASMINE	J04	A	A19	UNFROZEN
57	JASMINE	J05	A	A20	UNFROZEN
58	JASMINE	J06	A	A21	UNFROZEN
59	JASMINE	J07	A	A22	UNFROZEN
60	JASMINE	J08	A	A23	UNFROZEN
61	JASMINE	J09	A	A24	UNFROZEN
62	JASMINE	J10	A	A25	UNFROZEN
63	JASMINE	J11	A	A26	UNFROZEN
64	JASMINE	J12	A	A27	UNFROZEN
65	JASMINE	J13	A	A28	UNFROZEN
66	JASMINE	J14	A	A29	UNFROZEN
67	JASMINE	J15	A	A30	UNFROZEN
68	JASMINE	J16	A	A31	UNFROZEN
69	JASMINE	J17	A	A32	UNFROZEN
70	JASMINE	J18	A	A33	UNFROZEN
71	JASMINE	J19	A	A34	UNFROZEN
72	JASMINE	J20	A	A35	UNFROZEN
73	JASMINE	J21	B	B27	UNFROZEN
74	JASMINE	J22	B	B28	UNFROZEN
75	JASMINE	J23	B	B29	UNFROZEN
76	JASMINE	J24	B	B30	UNFROZEN
77	JASMINE	J25	B	B31	UNFROZEN
78	JASMINE	J26	B	B32	UNFROZEN
79	JASMINE	J27	B	B33	UNFROZEN
80	JASMINE	J28	B	B34	UNFROZEN
81	JASMINE	J29	B	B35	UNFROZEN
82	JASMINE	J30	B	B36	UNFROZEN

Sr. No.	BLOCK TYPE	BLOCK NO.	PLOT TYPE	PLOT NO.	FROZEN / UNFROZEN
83	JASMINE	J31	B	B37	UNFROZEN
84	JASMINE	J32	B	B38	UNFROZEN
85	JASMINE	J33	B	B39	UNFROZEN
86	JASMINE	J34	B	B45	UNFROZEN
87	JASMINE	J35	B	B44	UNFROZEN
88	JASMINE	J36	B	B43	UNFROZEN
89	JASMINE	J37	B	B42	UNFROZEN
90	JASMINE	J38	B	B41	UNFROZEN
91	JASMINE	J39	B	B40	UNFROZEN
92	JASMINE	J47	B	B46	UNFROZEN
93	JASMINE	J48	B	B47	UNFROZEN
94	JASMINE	J49	B	B48	UNFROZEN
95	JASMINE	J50	B	B49	UNFROZEN
96	JASMINE	J51	B	B50	FROZEN
97	JASMINE	J52	B	B51	FROZEN
98	JASMINE	J60	B	B57	FROZEN
99	JASMINE	J61	B	B56	FROZEN
100	JASMINE	J62	B	B55	FROZEN
101	JASMINE	J63	B	B54	FROZEN
102	JASMINE	J64	B	B53	FROZEN
103	JASMINE	J65	B	B52	FROZEN
104	JASMINE	J73	B	B58	FROZEN
105	JASMINE	J74	B	B59	FROZEN
106	JASMINE	J75	B	B60	FROZEN
107	JASMINE	J76	B	B61	UNFROZEN
108	JASMINE	J77	B	B62	UNFROZEN
109	JASMINE	J78	B	B63	UNFROZEN
110	JASMINE	J86	B	A36	UNFROZEN
111	JASMINE	J87	B	A37	UNFROZEN
112	JASMINE	J88	B	A38	UNFROZEN
113	JASMINE	J89	B	A39	UNFROZEN
114	JASMINE	J90	B	A40	UNFROZEN
115	JASMINE	J91	B	A41	UNFROZEN
116	JASMINE	J92	B	A42	UNFROZEN
117	JASMINE	J93	B	A43	UNFROZEN
118	JASMINE	J94	B	A44	UNFROZEN
119	JASMINE	J95	B	A45	UNFROZEN
120	JASMINE	J96	B	A46	UNFROZEN
121	JASMINE	J97	B	A47	UNFROZEN
122	JASMINE	J98	B	A48	UNFROZEN
123	JASMINE	J99	B	A49	UNFROZEN

Sr. No.	BLOCK TYPE	BLOCK NO.	PLOT TYPE	PLOT NO.	FROZEN / UNFROZEN
124	JASMINE	J100	M	M12	FROZEN
125	LOTUS	L01	A	A50	UNFROZEN
126	LOTUS	L02	A	A51	UNFROZEN
127	LOTUS	L03	A	A52	UNFROZEN
128	LOTUS	L04	A	A53	UNFROZEN
129	LOTUS	L05	A	A54	UNFROZEN
130	LOTUS	L06	A	A55	UNFROZEN
131	LOTUS	L07	A	A56	UNFROZEN
132	LOTUS	L08	A	A57	UNFROZEN
133	LOTUS	L09	A	A58	UNFROZEN
134	LOTUS	L10	A	A59	UNFROZEN
135	LOTUS	L11	A	A60	UNFROZEN
136	LOTUS	L12	A	A61	UNFROZEN
137	LOTUS	L13	A	A62	UNFROZEN
138	LOTUS	L14	A	A63	UNFROZEN
139	LOTUS	L15	A	A64	UNFROZEN
140	LOTUS	L16	A	A65	UNFROZEN
141	LOTUS	L17	A	A66	UNFROZEN
142	LOTUS	L18	A	A67	UNFROZEN
143	LOTUS	L19	A	A68	UNFROZEN
144	LOTUS	L20	A	A69	UNFROZEN
145	LOTUS	L21	B	B64	FROZEN
146	LOTUS	L22	B	B65	FROZEN
147	LOTUS	L23	B	B66	FROZEN
148	LOTUS	L24	B	B67	FROZEN
149	LOTUS	L25	B	B68	FROZEN
150	LOTUS	L26	B	B69	FROZEN
151	LOTUS	L27	B	B70	FROZEN
152	LOTUS	L28	B	B71	FROZEN
153	LOTUS	L29	B	B72	FROZEN
154	LOTUS	L30	B	B73	FROZEN
155	LOTUS	L31	B	B74	FROZEN
156	LOTUS	L32	B	B75	FROZEN
157	LOTUS	L33	B	B76	FROZEN
158	LOTUS	L34	B	B77	FROZEN
159	LOTUS	L35	B	B78	FROZEN
160	LOTUS	L36	B	B79	FROZEN
161	LOTUS	L37	B	B80	FROZEN
162	DAISY	D01	M	M13	FROZEN
163	DAISY	D02	M	M14	FROZEN
164	DAISY	D03	M	M15	FROZEN

Sr. No.	BLOCK TYPE	BLOCK NO.	PLOT TYPE	PLOT NO.	FROZEN / UNFROZEN
165	DAISY	D04	M	M16	FROZEN
166	DAISY	D05	M	M17	FROZEN
167	DAISY	D06	B	B81	FROZEN
168	DAISY	D07	B	B82	FROZEN
169	DAISY	D08	B	B83	FROZEN
170	DAISY	D09	B	B84	FROZEN
171	DAISY	D10	B	B85	FROZEN
172	DAISY	D11	B	B86	FROZEN
173	DAISY	D12	B	B87	FROZEN
174	DAISY	D13	B	B88	FROZEN
175	DAISY	D14	B	B89	FROZEN
176	DAISY	D15	B	B90	FROZEN
177	DAISY	D16	B	B91	FROZEN
178	DAISY	D17	B	M18	FROZEN
179	DAISY	D18	B	B92	FROZEN
180	DAISY	D19	B	B94	FROZEN
181	DAISY	D20	B	B94	FROZEN
182	DAISY	D21	B	B95	FROZEN
183	DAISY	D22	B	B96	FROZEN
184	DAISY	D23	B	B97	FROZEN
185	DAISY	D24	B	B98	FROZEN
186	DAISY	D25	B	B99	FROZEN
187	DAISY	D26	B	B100	FROZEN
188	DAISY	D27	B	B101	FROZEN
189	DAISY	D28	B	B102	FROZEN
190	DAISY	D29	B	B103	FROZEN
191	DAISY	D30	B	B104	FROZEN

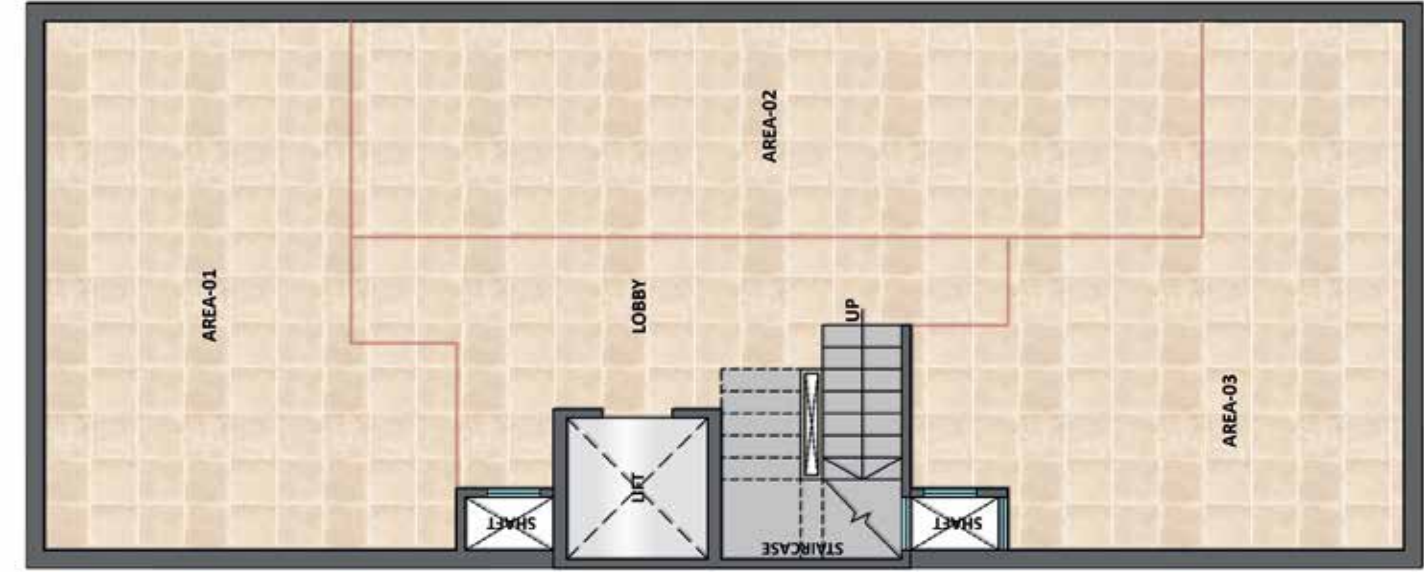


TYPE-A
3BHK + 2 TOILET

STILT FLOOR PLAN



BASEMENT PLAN



TERRACE PLAN

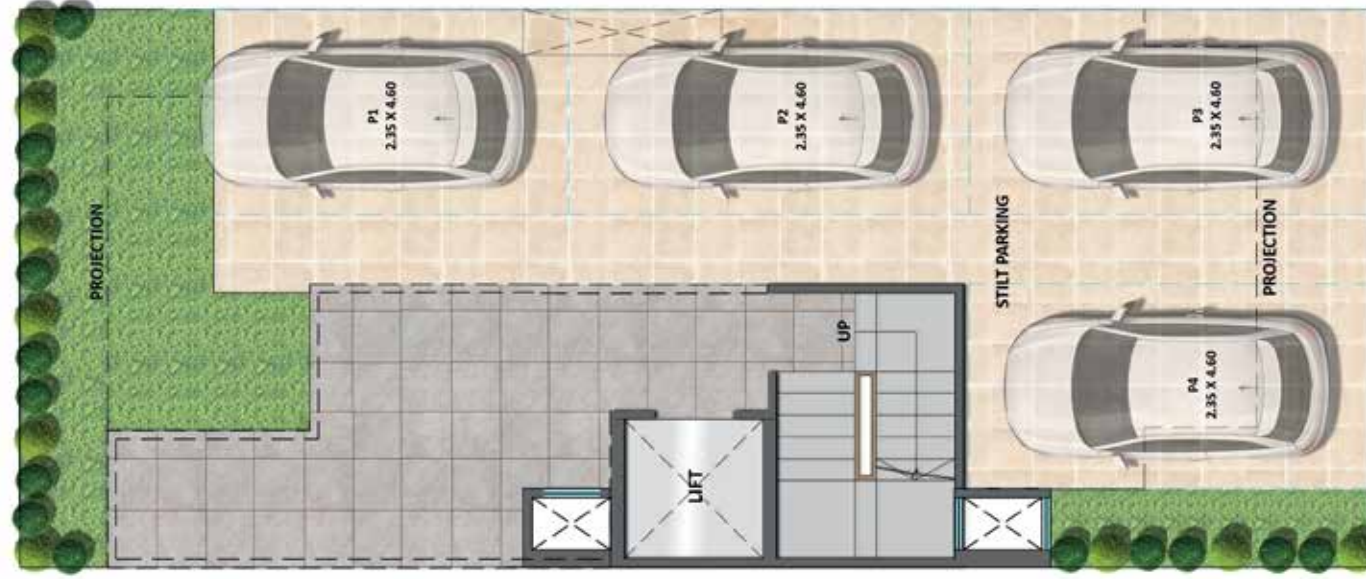


UNIT PLAN

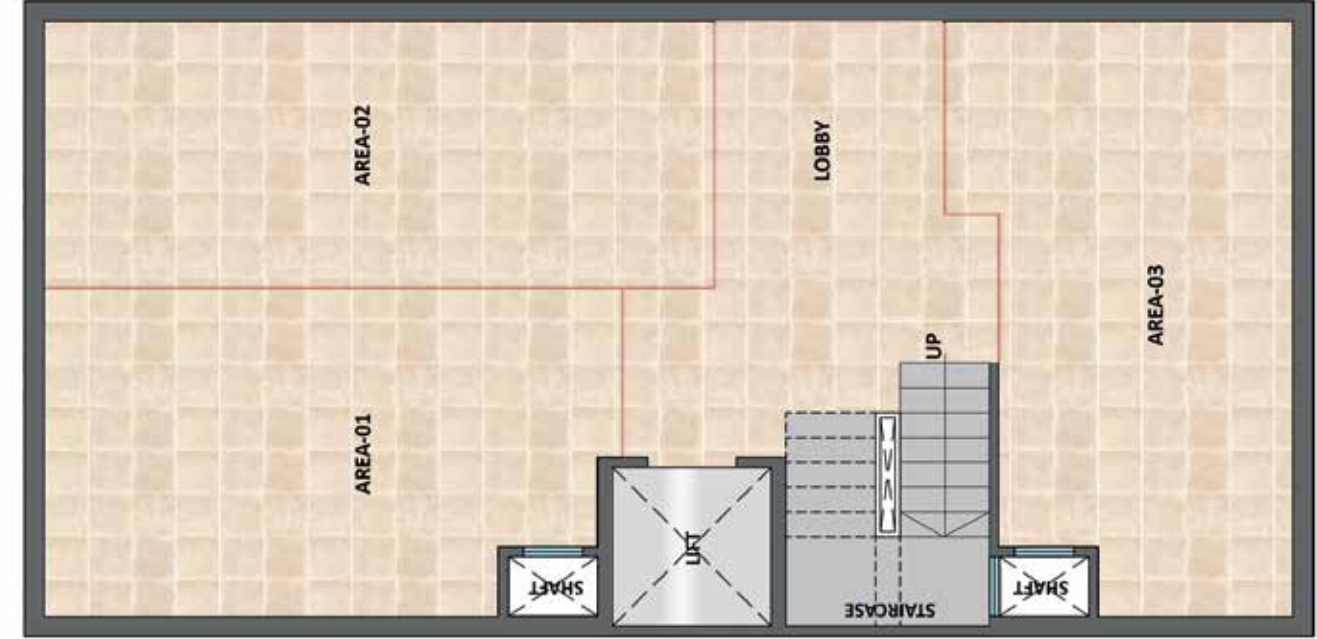


TYPE-B
2BHK + 2 TOILET

STILT FLOOR PLAN



BASEMENT PLAN



TERRACE PLAN



UNIT PLAN



SPECIFICATIONS

DRAWING / DINING ROOM



FLOOR
VITRIFIED TILES



CEILING
OIL BOUND DISTEMPER



WALL
ACRYLIC EMULSION

BALCONIES



FLOOR
ANTI-SKID / MATT
FINISH CERAMIC TILES



RAILING
GLASS RAILING

DOORS & WINDOWS



MAIN / INTERNAL DOOR FRAME
HARD WOOD / RED MERANTI



INTERNAL DOOR SHUTTERS
BOTH SIDE LAMINATED DOORS



EXTERNAL DOORS & WINDOWS
UPVC/ALUMINIUM POWDER COATED

ELECTRICAL

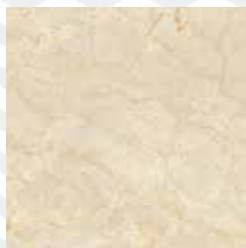


WIRING
COPPER ELECTRICAL WIRING
THROUGHOUT IN CONCEALED
CONDUIT FOR LIGHT POINTS



SWITCHES / SOCKET
ISI MARKED SWITCHES
& SOCKETS

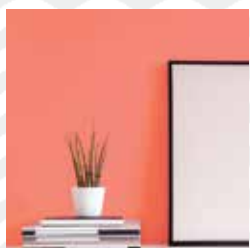
BEDROOM



FLOOR
VITRIFIED TILES



CEILING
OIL BOUND DISTEMPER



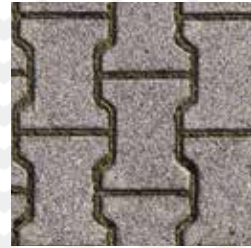
WALL
ACRYLIC EMULSION

TERRACE



BRICKBAT COBA OR
WATER PROOFING TREATMENT

EXTERNAL DEVELOPMENT



INTERNAL ROADS
INTERLOCKING BLOCKS/
TREMIX CONCRETE ROAD



BOUNDARY WALL
RCC / BRICK WALL
WITH PLASTER &
EXTERNAL WEATHER
PROOF PAINT FINISH



EXTERNAL PAINT
WEATHER PROOF TEXTURE
PAINT IN BUILDINGS

STRUCTURE



EARTHQUAKE RESISTANT
RCC FRAMED STRUCTURE
AS PER SEISMIC ZONE

KITCHEN



FLOOR
VITRIFIED /
CERAMIC TILES



WALL / CEILING
OIL BOUND DISTEMPER



DADO
CERAMIC TILES 600 MM
ABOVE THE COUNTER



COUNTER TOP
GRANITE STONE



FITTINGS & FIXTURES
ISI MARKED CP FITTINGS
& SS SINK

TOILET & BATH



FLOOR
ANTI-SKID
CERAMIC TILES



WALL
CERAMIC TILES TILL
4FEET / 7'-0" FEET



CEILING
GRID FALSE CEILING



FITTINGS & FIXTURES ISI MARKED
CP FITTINGS, WC & WASHBASIN

BEST BRANDS FOR THE BEST EXPERIENCE

<p>TILES</p> <p>Kajaria</p> <p>VARMORA</p> <p>orientbell</p>	<p>PAINTS</p> <p>asianpaints</p> <p>Dulux</p> <p>Berger</p> <p>WOODEN DOORS</p> <p>Bhutan tuff</p> <p>ramaply</p> <p>KITCHEN SINK</p> <p>CARYSIL</p> <p>Jayma</p>	<p>DOOR LOCKS & HANDLES</p> <p>Dorsët</p> <p>Qquba</p> <p>IPSA</p> <p>WIRES & CABLES</p> <p>Finolex</p> <p>HAVELLS</p> <p>POLYCAB</p>	<p>GLASS</p> <p>SAINT-GOBAIN</p> <p>UPVC DOORS & WINDOW PROFILES</p> <p>KÖMMERLING</p> <p>ÖKOTECH</p> <p>CP BATH FITTINGS</p> <p>hindware</p> <p>Jaquar</p> <p>Kerovit</p>	<p>LIFTS</p> <p>OTIS</p> <p>KONE</p> <p>Schindler</p> <p>ELEVATORS BIRLA GROUP</p> <p>FUJITEC</p> <p>thyssenkrupp</p>	<p>PLUMBING PIPES</p> <p>Supreme</p> <p>ashirvad</p> <p>BIRLA HIL PIPES</p> <p>LIGHTING</p> <p>wipro</p> <p>OSRAM</p> <p>LEDVANCE</p> <p>SYSKA</p> <p>BAJAJ</p>
--	---	---	---	--	---

Note : Flooring in mix design of marble, granite and tile. Accordingly, variations in shade and/ or size and/ or colour and/ or design of the tiles, motifs, mica etc. may occur.

All products, names, logos, brands, trademarks are properties of their respective owners. Product of other companies may also be used. However, priority will be given to the aforesaid brands/companies.

ABOUT SIGNATURE GLOBAL

Signature Global believe in the policy of transparency. Though we've created our own distinct identity in the field of real estate, we're working more passionately to maintain and improve our reach in the sector. We emphasize on the core values of reliability, responsibility and global standards with regard to the International Real Estate realm.

The group has outlined its vision for 'India of Tomorrow' with a mission of 'Har Parivar ek Ghar' (A home for every family). With a vision to redefine the current conventions of Indian real estate development by championing excellence in craftsman, planning and service, the company has successfully launched 25 housing projects, all in the prime locations including Gurugram, Sohna and Karnal in Haryana and a commercial mall focussing on the interest of customers in Vaishali, Ghaziabad, Uttar Pradesh. The company has successfully delivered Solera, Synera, Andour Heights, Grand IVA and Orchard Avenue in Gurugram and offered possession of Sunrise in Karnal, months before the expected time of delivery. Each residential project is complimented with one branded retail hub christened as Signum. The hallmarks of these

projects are ideal location, impeccable quality of construction with excellent amenities at reasonable prices. They are unique in terms of planning, design, quality, workmanship, transparency, customer delight and service. We have ushered in best global practices of transparency and professionalism, with 'think global, act local' approach, doing product development as per the needs of our valued consumers.

We are offering Green Homes which are IGBC and Edge Certified that provides a solution to capitalize on the value of green buildings by promoting benefits to customers while protecting environment. We are deploying cutting edge technology and best project management techniques to achieve scale and efficiency to boost affordability.

Signature Global works with a team of experienced architects, master planners and designers who are among the best in the industry. We had partnered with several leading National and International institutions like IFC – an arm of world bank, HDFC CAPITAL, ICICI Prudential etc and takes pride in growing its reach to customers by seeking direct online applications. Leading a team of

highly enthusiastic professionals is always an enjoyable task. The same becomes even more interesting when the society starts recognizing and rewarding your efforts. In the last couple of years, we have won several awards from prestigious media houses for our outstanding contribution to the real estate. We were awarded as 'Haryana's Icons' and 'Emerging Developer' by Times of India, 'Business Leaders in Affordable Housing' by ASSOCHAM, 'Best Upcoming Developer of the Year' by Realty Sutra, 'World Best Realty Brand Award' by Realty Fact and 'Game Changer of India Realty' and 'Best Developer of the Year' awards by Indian Realty Award, 'Best LIG Housing project for Solera' by PMAY Empowering India 2019, 'Six Star CARE Rating for Solera', ICRA the rating agency has added new feathers by adjudging Synera as seven star rating project. Recently, we have been awarded as 'Affordable Housing Project of the Year for Solera', 'Electronic Media Campaign of the Year' and 'Sustainable Business Leader of the Year' by Realty Plus. We have also got ISO 9001:2015; 14001:2015; 45001:2018 Certification.

PROJECTS LAUNCHED

RESIDENTIAL 25

COMMERCIAL 24

MAKING REALTY A REALITY WITH RELIABILITY AND RESPONSIBILITY



PROJECTS DELIVERED

RESIDENTIAL 6

COMMERCIAL 6

